




# MOTOR REPLACEMENT

TO REDUCE THE RISK OF FIRE, ELECTRIC SHOCK, OR INJURY TO PERSONS, OBSERVE THE FOLLOWING:

-  **WARNING: ELECTRICAL SHOCK HAZARD.** Disconnect the power supply before performing service or maintenance. Failure to do so may result in serious injury or death.
-  **WARNING:** When service or replacement of a component in the fan requires the removal or disconnection of a safety device, the safety device is to be reinstalled or remounted as previously installed.
-  **CAUTION:** The Big Ass Fans product warranty will not cover equipment damage or failure that is caused by improper installation or use.

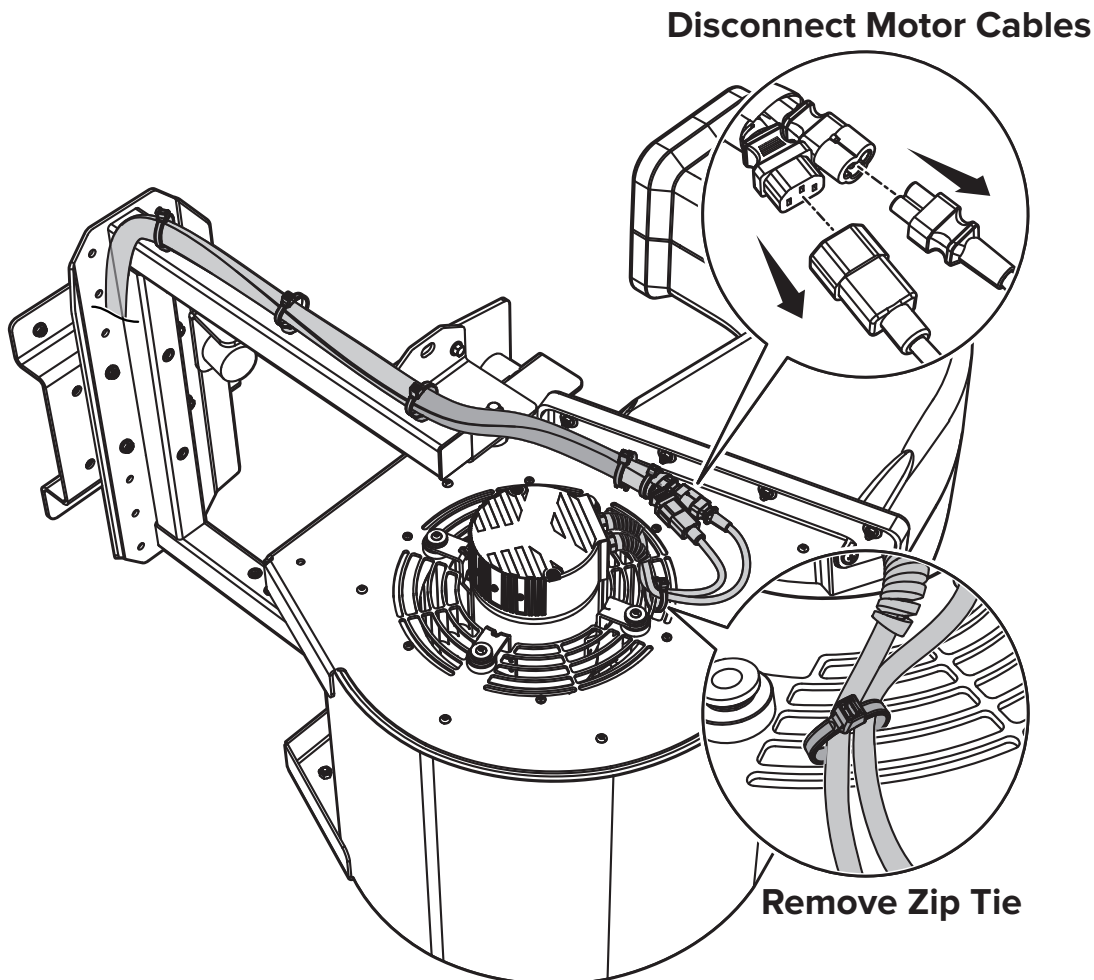


Motor is heavy and must be supported during removal and installation. Two people are recommended for motor replacement. Use extra caution when replacing the motor on a Right Side Mount fan (fan mounted to right side of dock door with motor on bottom of fan assembly). Motor will fall after hardware is removed if not supported.

## 1. Disconnect cables

Remove zip tie securing the two motor cables to the motor cage, and then disconnect the two cables (*Fig. 1*).

*Fig. 1*



*Left Side Mount orientation shown (fan mounted to left side of dock door with motor on top of fan assembly).*

# MOTOR REPLACEMENT

## 2. Remove fan cage and loosen shaft set screw

Remove the three screws securing fan cage to fan housing, and remove fan cage (Fig. 2.1). **Save screws for reinstallation.** Inside fan assembly, remove motor shaft retainer from shaft and **discard it**, and then loosen the shaft set screw (Fig. 2.2).

Fig. 2.1

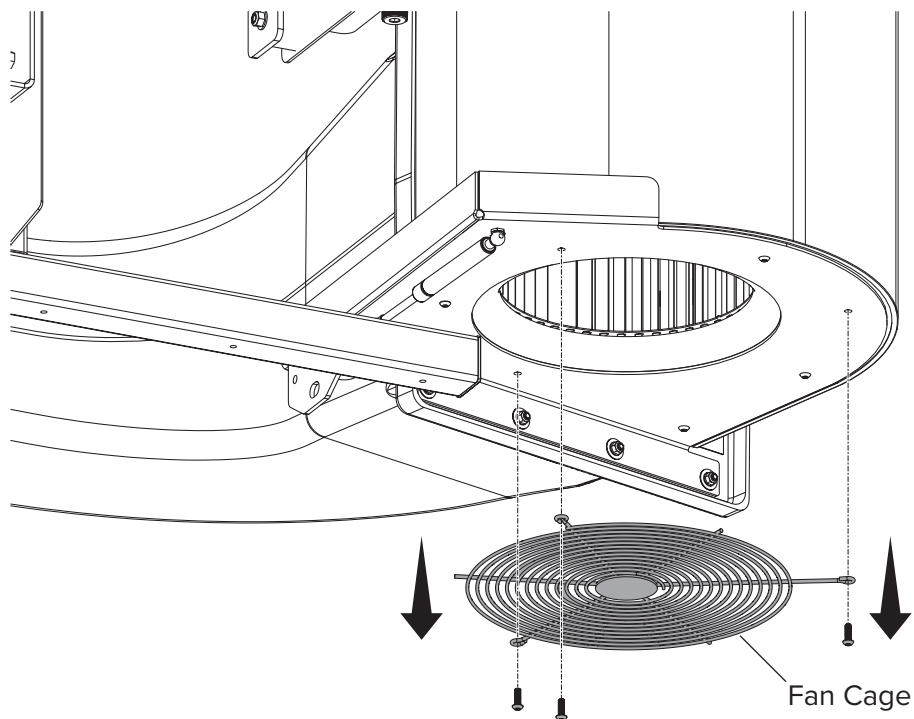
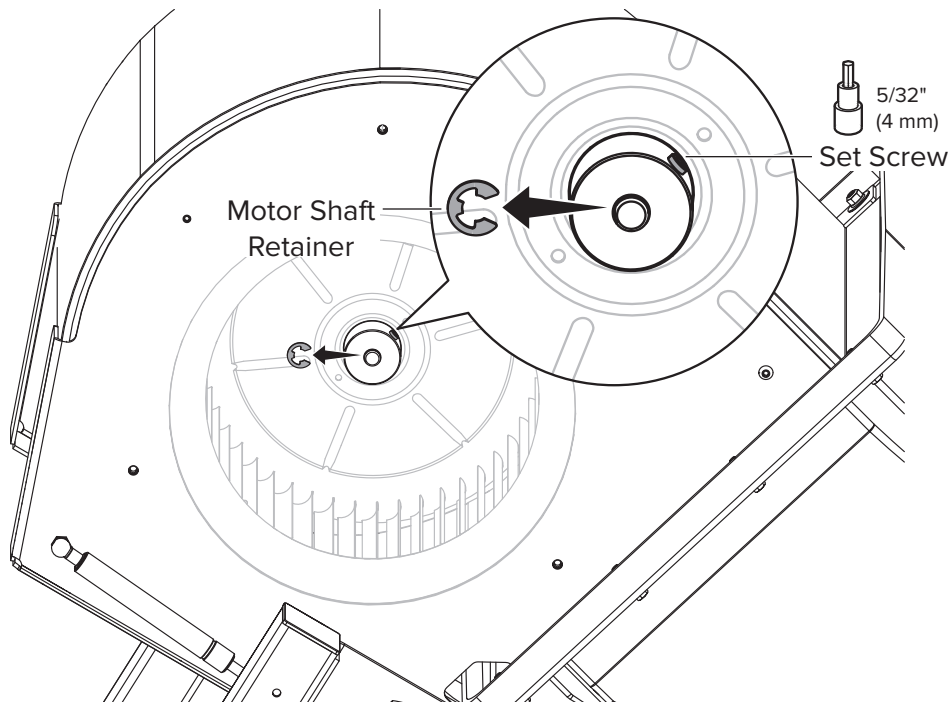


Fig. 2.2



Left Side Mount orientation shown.

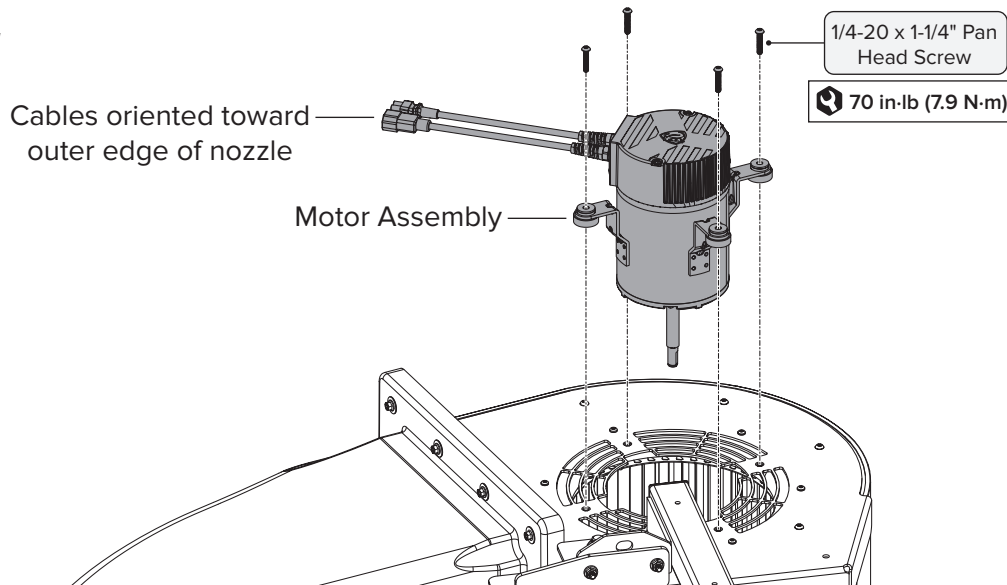
## 3. Replace motor

### ⚠ CAUTION

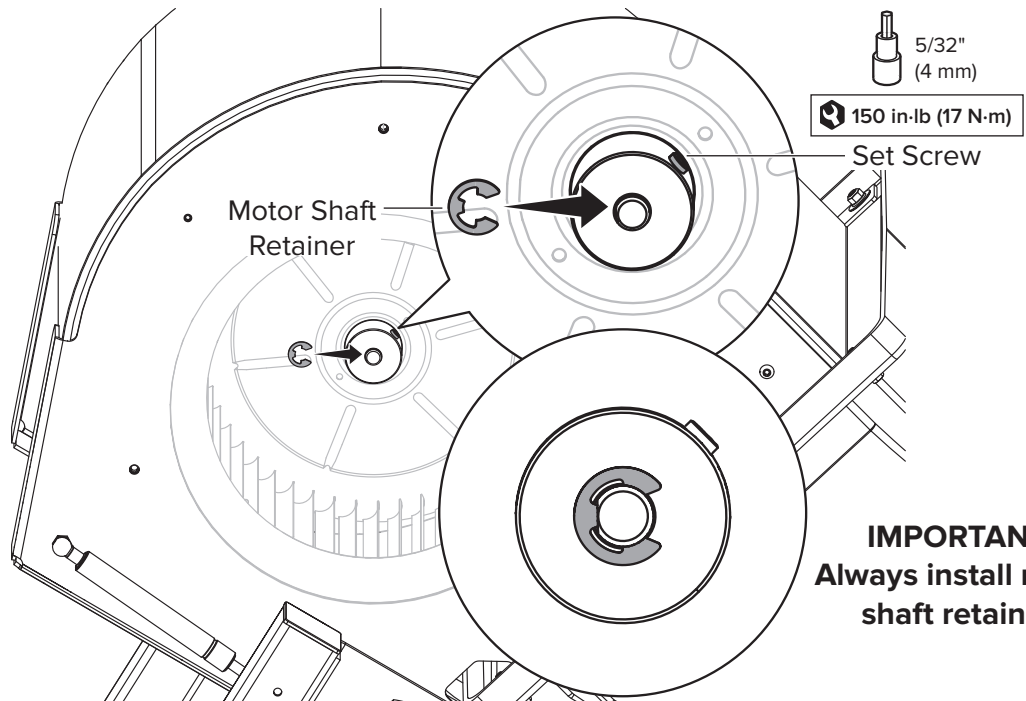
Use extra caution when replacing the motor on a Right Side Mount fan (fan mounted to right side of dock door with motor on bottom of fan assembly). Motor will fall after hardware is removed if not supported.

Remove the four screws securing motor assembly to fan housing. **Discard the screws.** Remove motor assembly. Replace with new motor assembly and the **new** screws provided in this kit (*Fig. 3.1*). **Make sure motor cables are oriented toward outer edge of nozzle as shown.** Install **new** motor shaft retainer provided in this kit onto motor shaft. Make sure retainer is oriented as shown with inner protrusion resting against flat area of shaft (*Fig. 3.2*). Tighten shaft set screw to **150 in-lb (17 N-m)**.

**Fig. 3.1**



**Fig. 3.2**



Left Side Mount orientation shown.

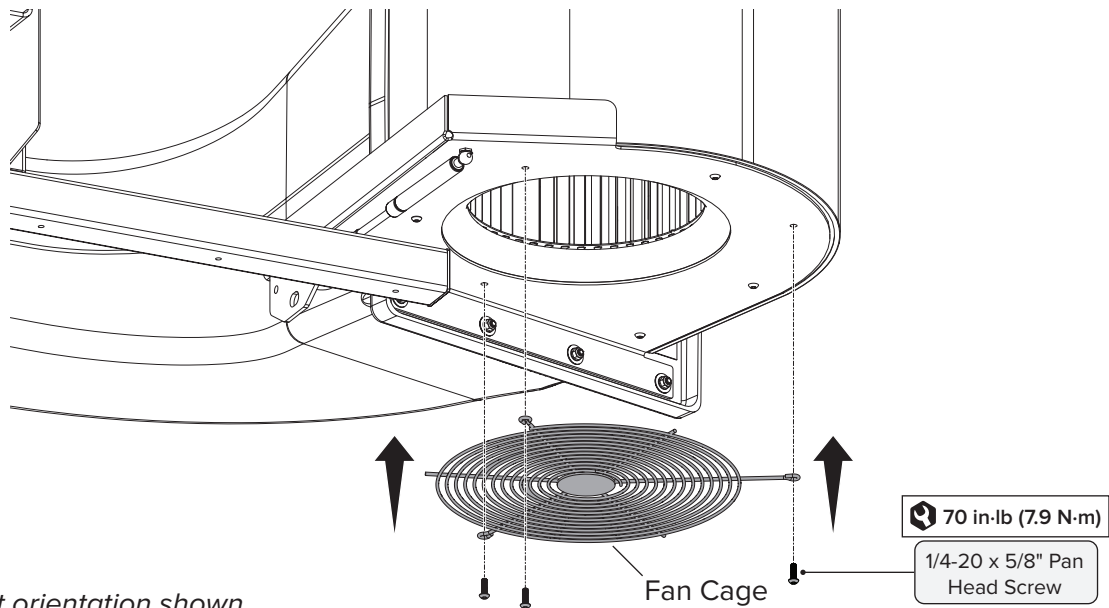
**IMPORTANT:**  
Always install motor shaft retainer.

## MOTOR REPLACEMENT

### 4. Reinstall fan cage

Secure fan cage to fan housing with the three screws (Fig. 4).

Fig. 4

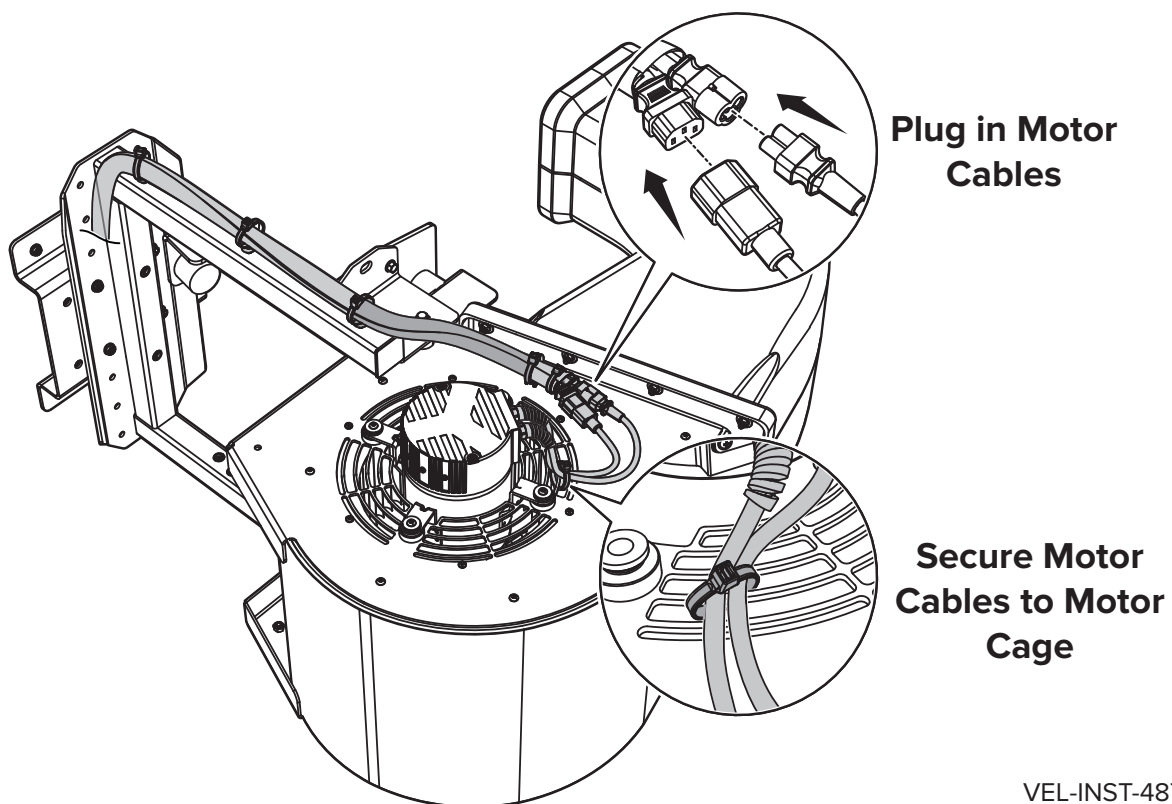


Left Side Mount orientation shown.

### 5. Connect cables

Plug in the two motor cables, and then secure cables to motor cage with a zip tie in the location shown (Fig. 5).

Fig. 5



Left Side Mount orientation shown.

VEL-INST-487-MUL-01  
Rev. A 06/05/2025